

**LUDLUM MODEL 43-92  
ALPHA SCINTILLATOR DETECTOR**

**April 2011**

**LUDLUM MODEL 43-92  
ALPHA SCINTILLATOR DETECTOR**

**April 2011**



**LUDLUM MEASUREMENTS, INC**  
501 OAK STREET, P.O. BOX 810  
SWEETWATER, TEXAS 79556  
325-235-5494, FAX: 325-235-4672

## TABLE OF CONTENTS

<b>1. GENERAL .....</b>	<b>1</b>
<b>2. SPECIFICATIONS .....</b>	<b>1</b>
<b>3. REPLACEMENT PARTS LIST.....</b>	<b>2</b>
<b>Assembly View, Drawing 393 x 165 .....</b>	<b>2</b>
<b>2.9 cm (1.13 in.) 9 Stage Voltage Divider Board, Drawing 2 x 232 .....</b>	<b>3</b>
<b>DRAWINGS AND DIAGRAMS .....</b>	<b>4</b>

## 1. GENERAL

---

The Model 43-92 alpha scintillation detector is designed for alpha contamination surveys. An alpha scintillator, zinc sulfide [ZnS (Ag)], is applied to the window backup, which is covered by metalized Mylar to reduce light response (causing excessive background counts). An 88% open, square-hole screen protects the window.

The Model 43-92 is compatible with any LMI general-purpose survey meter,

ratemeter or scaler. Refer to the instrument manual for calibration procedures.

The photomultiplier tube may easily be removed for repair. Refer to the assembly view drawing near the end of this manual for details of construction and parts.

The photomultiplier tube typically operates between 500-1200 volts, and the manufacturer recommends no more than 1500 volts.

**MYLAR WINDOW REPLACEMENT AND  
CALIBRATION**

When changing the Mylar window on a detector, it is not necessary to recalibrate the instrument as long as a functional check is performed on the instrument and its readings are consistent with the readings before the window was replaced.

## 2. SPECIFICATIONS

---

- **Photomultiplier Tube:** 2.9 cm (1.13 in.) diameter
- **Scintillator Material:** ZnS(Ag)
- **Window:** 0.8 mg/cm<sup>2</sup> Mylar (1.2 mg/cm<sup>2</sup> recommended for outdoor use)
- **Window Area:**  
Active area: approximately 100 cm<sup>2</sup>  
Open area: approximately 88 cm<sup>2</sup>
- **Efficiency (4π):**  
Typically 20% for <sup>239</sup>Pu
- **Typical Background:**  
3 cpm or less
- **Response Uniformity:**  
less than 10% from average reading
- **Operating Voltage:** 500-1200 volts (1500 maximum)
- **Temperature Range:** -20 to 50 °C (-4 to 122 °F)
- **Connector:** series "C," unless specified otherwise
- **Protective Screen:** 0.030 thick stainless steel, 6.5 mm (0.26 inch) square-hole, 88% open
- **Size:** 6.4 x 9.7 x 31.2 cm (2.5 x 3.8 x 12.3 inches)
- **Weight:** 0.05 kg (1.0 lb)
- **Construction:** aluminum with beige powder coating

April 2011

**3. REPLACEMENT PARTS LIST**

<b>Reference No.</b>	<b>Description</b>	<b>Part No.</b>
<b><u>Assembly View, Drawing 393 x 165</u></b>		
UNIT	Complete Assembly Model 43-92 Scintillator	47-2555

<b>Part No.</b>	<b>Description</b>	<b>Qty.</b>
01-5019	Foil-netic	1 ea.
01-5026	Foil-co-nectic	1 ea.
2393-141	Welded Body Assembly	1 ea.
4393-069	Mylar Window Assembly	1 ea.
5433-318	2.9 cm (1.13 in.) Voltage Divider Board	1 ea.
4002-572	Photomultiplier Tube/Socket Assy	1 ea.
7002-505	Connector End Cap	1 ea.
16-8366	O-Ring	1 ea.
2310698	Mirror	1 ea.
7002-065-04	Sponge	2 ea.
2393-117	Tube Holder	1 ea.
7393-017	Window Holder	1 ea.
7393-171	Window Screen (external snap-on)	1 ea.
4393-164	Window Backup	1 ea.
7396-137	Face Ring	1 ea.
7393-139	Gasket	1 ea.
4478-011	RECPT-UG706/U SERIES "C"	1 ea.
7393-162	Vinyl Cover	1 ea.

April 2011

---

<b>Reference No.</b>	<b>Description</b>	<b>Part No.</b>
<b>2.9 cm (1.13 in.) Voltage Divider Board, Drawing 2 x 232</b>		
<hr/>		
BOARD	Assembled 2.9 cm (1.13 in.) Voltage Divider Board	5002-570
<b>CAPACITORS</b>		
C003	0.01 $\mu$ F, 500V	04-5696
<b>RESISTORS</b>		
R008	1 MEG, 1/4 W, 1%	12-7844
R001-R007	10 MEG, 1/8 W, 1%	12-7996
R009-R101	10 MEG, 1/8 W, 1%	12-7996

## **DRAWINGS AND DIAGRAMS**

---

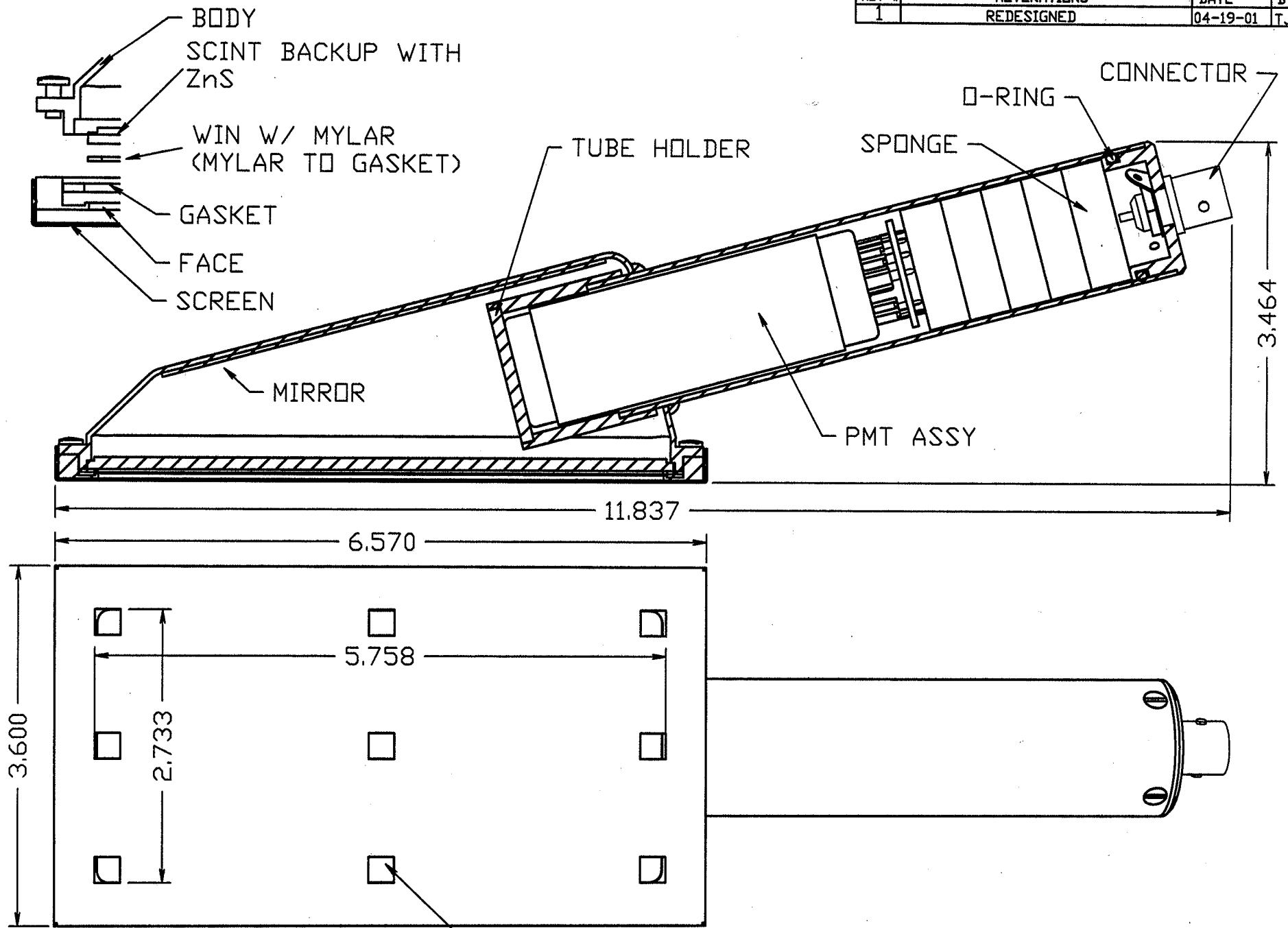
Assembly View, Drawing 393 x 165

Mylar Window Replacement, Drawing 393 x 165A

2.9 cm (1.13 cm) Voltage Divider Board, Drawing 2 x 232

2.9 cm (1.13 cm) Voltage Divider Board Component Layout, Drawing 2 x 233

REV #	ALTERATIONS	DATE	BY
1	REDESIGNED	04-19-01	TJR



88% OPEN  
(ALL HOLES ARE NOT SHOWN)

DWN	DATE	CHECKED	APPROVED
TJR	04-19-01	vw 5-22-01	bck 5-23-01
TITLE: 43-92 W/ SNAP ON SCRN			
LUDLUM REPAIRMENTS, INC. 816 DUK STREET SWEETWATER, TEXAS 75556		SERIES	SHEET
		393	165

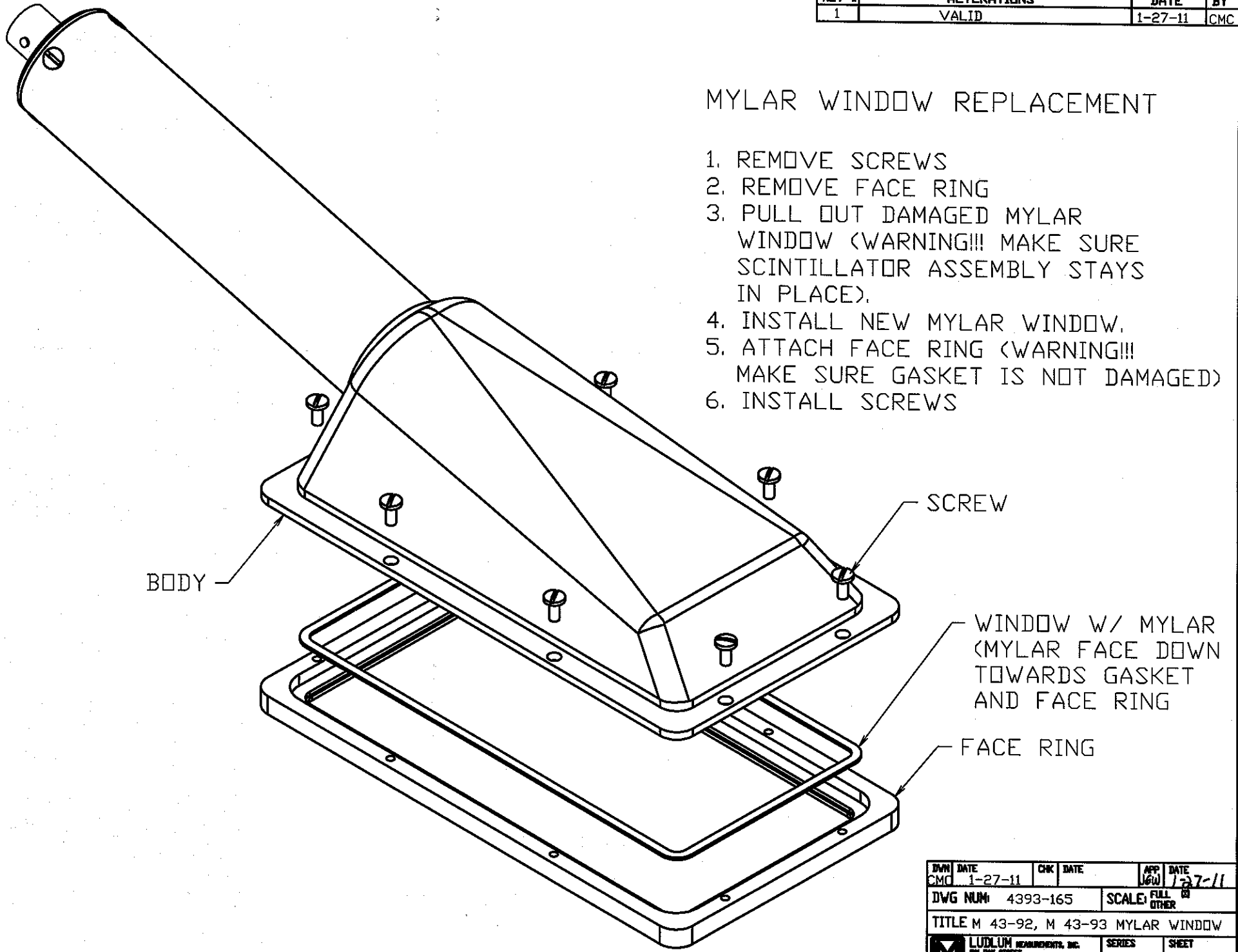
VIF



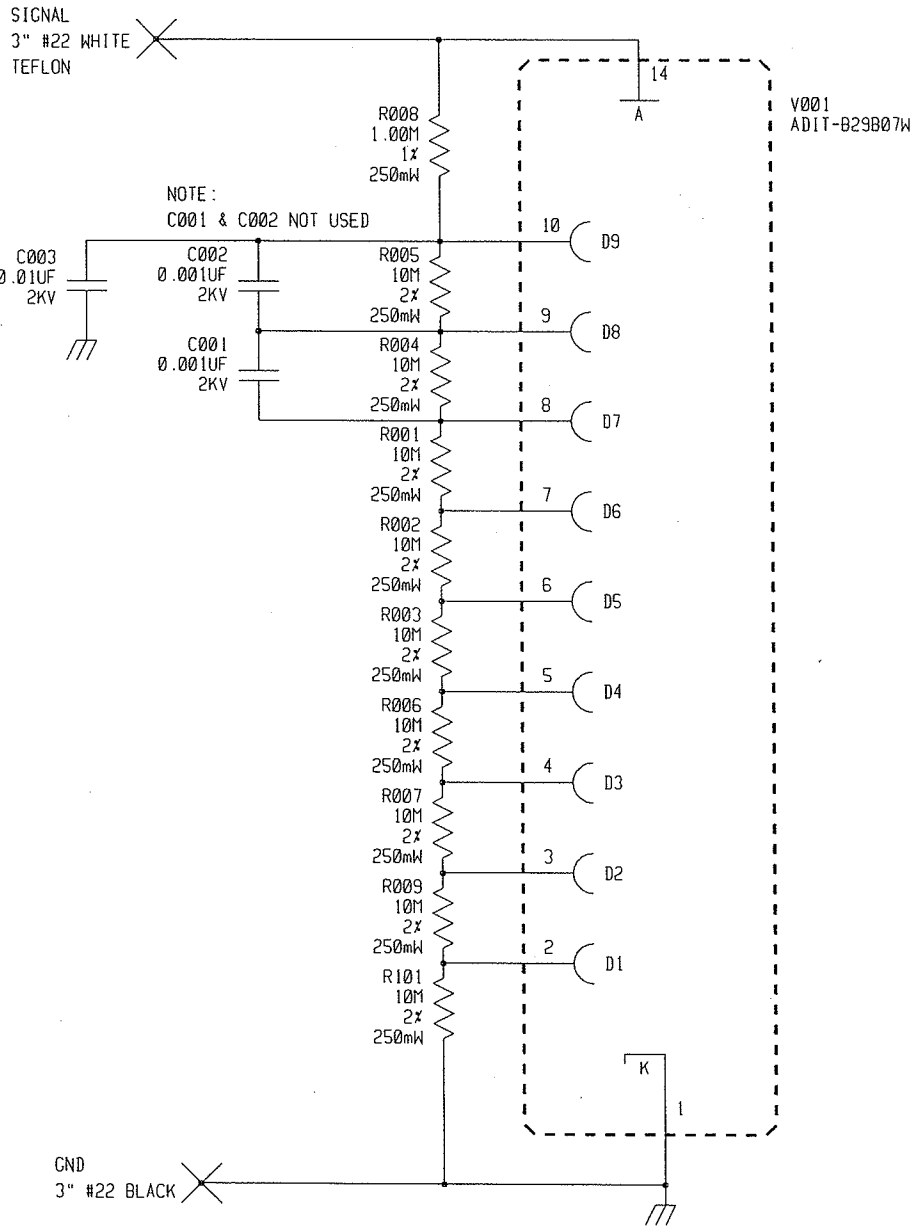
REV #	ALTERATIONS	DATE	BY
1	VALID	1-27-11	CMC

## MYLAR WINDOW REPLACEMENT

1. REMOVE SCREWS
2. REMOVE FACE RING
3. PULL OUT DAMAGED MYLAR WINDOW (WARNING!!! MAKE SURE SCINTILLATOR ASSEMBLY STAYS IN PLACE).
4. INSTALL NEW MYLAR WINDOW.
5. ATTACH FACE RING (WARNING!!! MAKE SURE GASKET IS NOT DAMAGED)
6. INSTALL SCREWS

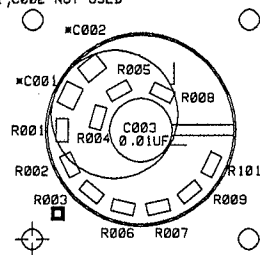


DMN	DATE	CHK	DATE	APP	DATE
CMC	1-27-11			LOW	1-27-11
DWG NUM	4393-165			SCALE	FULL OTHER
TITLE M 43-92, M 43-93 MYLAR WINDOW					
LUDLUM MEASUREMENTS, INC. 501 ONE STREET SARASOTA, FLORIDA 34236			SERIES	SHEET	
			393	165A	



UPDATED	-		LUDLUM MEASUREMENTS INC.			
DR	CKB	25-NOV-97	TITLE: 1.125" VOLTAGE DIVIDER 9 STAGE			
DSCN	RC	25-NOV-97	BOARD# 5002-570			
APPD	<i>R/S</i>	<i>13J007</i>	SIZE	MODEL	SERIES	SHEET
NEXT HIGHER ASSY.			C	1.125"	2	232
14:06:06		7-Feb-06	SB002570		SHEET 1 OF 1	

NOTE:  
C001, C002 NOT USED



V001  
ADIT-B29B07H

LUDLUM MEASUREMENTS INC. SHEETWATER, TX.			
DR	CKB	03-DEC-97	TITLE: 9 STAGE VOLTAGE DIVIDER
CHK		BOARD# 5002-570	BS002570
DSCN	RC	26-NOV-97	MODEL 1-1/8" SERIES 2 SHEET 233
APP	<i>BS</i>		COMP ARTWORK <input type="checkbox"/> SLDR ARTWORK <input type="checkbox"/>
08:28:25		13-Jun-07	COMP OUTLINE <input type="checkbox"/> SLDR OUTLINE <input type="checkbox"/>
			COMP PASTE <input type="checkbox"/> COMP MASK <input type="checkbox"/> SLDR PASTE <input type="checkbox"/> SLDR MASK <input type="checkbox"/>