

**DIGITAL CONVERSION
ADDENDUM
(Model 3, 3A, 5, 12, 14C, 15, 16, & 18)
Revised
January 2004**



LUDLUM MEASUREMENTS, INC.
501 OAK ST., P.O. BOX 810
SWEETWATER, TX 79556
325/235-5494 FAX: 325/235-4672

LUDLUM MEASUREMENTS, INC.

501 Oak St.
P.O. Box 810
Sweetwater, Texas 79556
Phone: 325-235-5494 / 800-622-0828 (USA)
Fax: 325-235-4672
e-mail: ludlum@ludlums.com
Website: <http://www.ludlums.com>



Designer and Manufacturer
of
Scientific and Industrial
Instruments

DIGITAL CONVERSION ADDENDUM
January 2004

This unit has been modified to add a scaling digital readout in addition to its analog meter. The 5½-digit scaler readout can display counts up to "199999". Any count greater than "199999" will generate an overflow and will be shown on the LCD display as a "←199999".

When the unit is turned on, the following will be displayed on the LCD display:

- Test of all LCD segments
- Program number (example 36301)
- Program revision (example n02)
- The current setting of the count-time rotary switch (0.1, 0.5, 1, 2, or 10)
- "0" zero, indicating the unit is ready

The scaling time is selected by a rotary switch mounted on the bezel. The selections are 0.1, 0.5, 1, 2, and 10-minute counts. The count is started by depressing and releasing the button mounted at the end of the instrument handle. The scaling accuracy is 1% of reading or better. The count can be stopped by pressing and releasing the count button a second time.

When added to a unit with a window, or upper level discriminator control, the count is the result of the window setting. When the WIN switch is in the IN position, only the pulses within the window are counted. When the window is in the OUT position all pulses are counted.

LUDLUM MEASUREMENTS, INC.

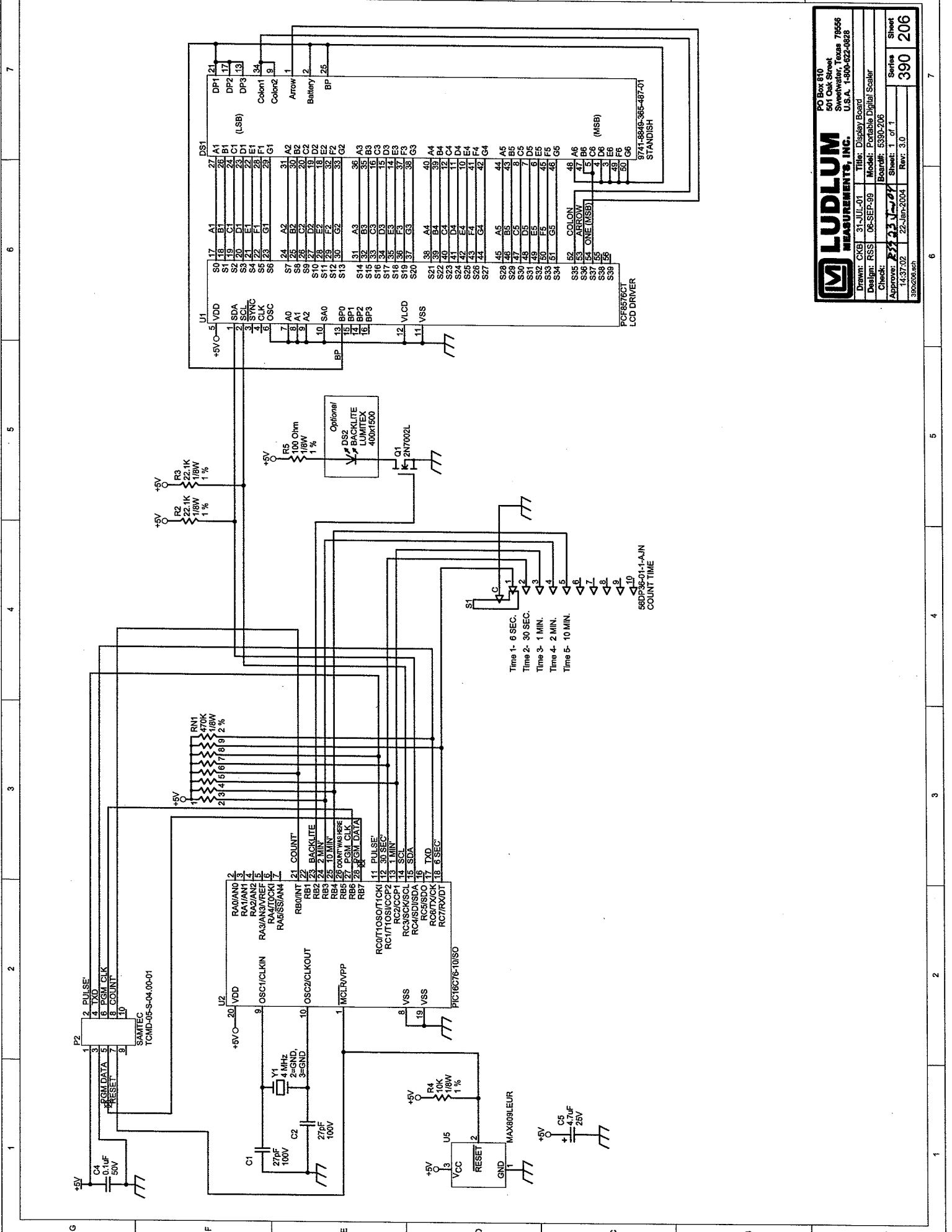
501 Oak St.
P.O. Box 810
Sweetwater, Texas 79556
Phone: 325-235-5494 / 800-622-0828 (USA)
Fax: 325-235-4672
e-mail: ludlum@ludlums.com
Website: <http://www.ludlums.com>



Designer and Manufacturer
of
Scientific and Industrial
Instruments

PARTS LIST

Quantity	Description	Part No.
*	Portable Scaler Option	4464-114
1	Knob	08-6601
1	RECPT-142-0701-406	18-8443
1	Meter-Zero Adjust	15-8065
2	Screw-2-56 X 1/8 FIL	17-8927
4	Screw-6-32 X 1 1/8 BH	17-8929
2	Screw-2-56 X 1/2 FIL HD	17-8960
2	Spacer-2-56 X .50 M-F	18-9112
2	Spacer-#2 X .187 NYL	18-9143
2	Washer-#4(#5) Nylon Flat	20-9012
1	Portable Bezel W/Glass (Dig)	4464-125
1	Portable Digital Display Board	5390-206
1	Portable Digital Interconnect Board	5390-261
1	Portable Digital Meter Face	7464-124
1	Harness-Portable Scaler Option	8464-140
1	Digital Nameplate	9363-714



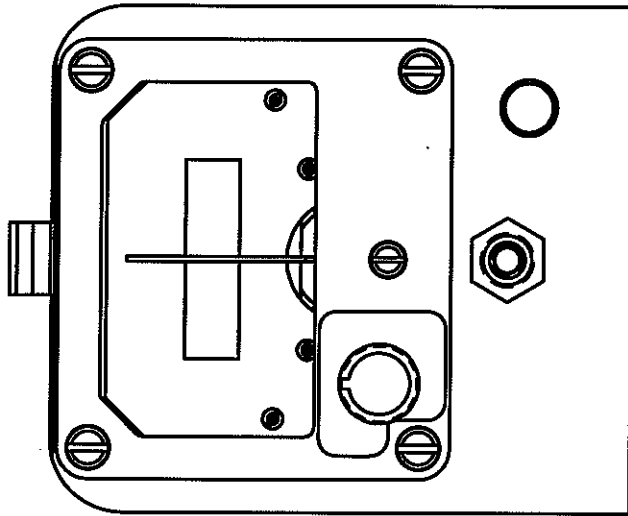
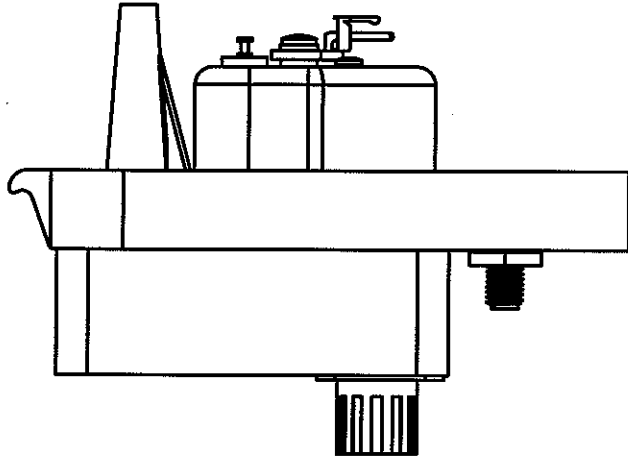
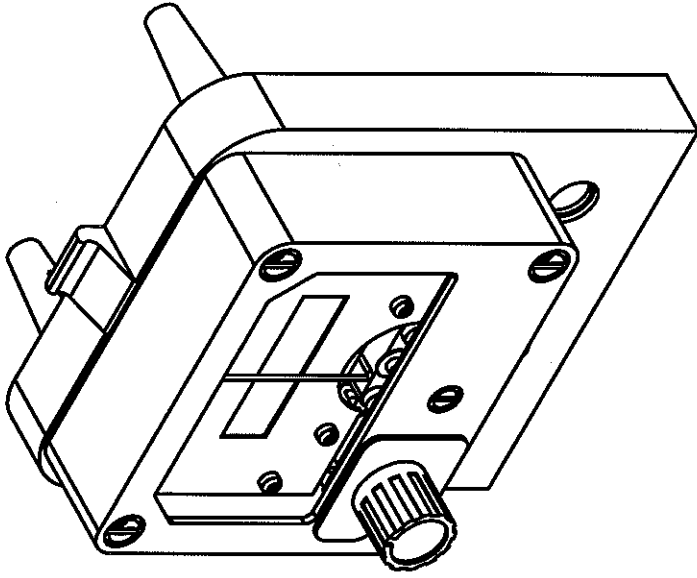
Time 1- 6 SEC.
 Time 2- 30 SEC.
 Time 3- 1 MIN.
 Time 4- 2 MIN.
 Time 5- 10 MIN.

66DP38-01-1-A-JN
 COUNT TIME

LUDLUM MEASUREMENTS, INC.
 PO Box 810
 501 Oak Street
 Evansville, Indiana 47611
 U.S.A. 1-800-822-8828

Drawn: CKB	31-JUL-81	Title: Display Board
Design: RSS	08-SEP-89	Model: Portable Digital Scaler
Check: [Signature]	[Signature]	Board#: 539G-206
Approve: [Signature]	[Signature]	Sheet: 1 of 1
14:37:02	22-Jan-2004	Rev: 3.0
390206.sch		Series
		390
		206

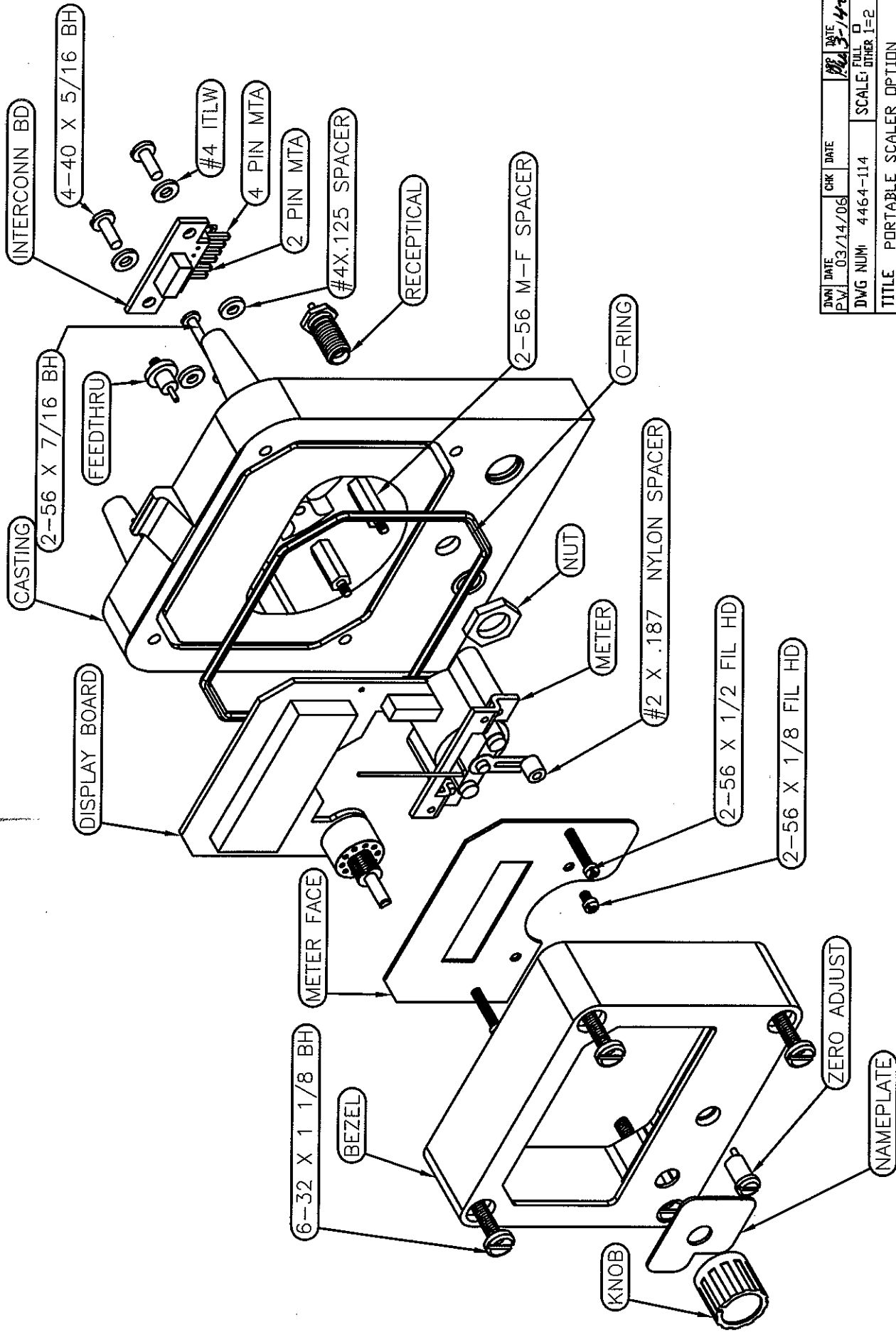
REV #	ALTERATIONS	DATE	BY
1	VALID	3/14/02	DSW



DSW DATE	CHK DATE	APP DATE	DATE
DSW 3/14/02	AKJ 3-14-02		
DWG NUM: 4464-114	SCALE: OTHER I=0.75	FULL P	
TITLE: PORTABLE SCALER OPTION			
LUDLUM MEASUREMENTS, INC. 501 OAK STREET SWEETWATER, TEXAS 75788		SERIES	SHEET
		464	114

NOTE: ON THROUGH HOLE BOARDS
 ATTACH THE BLK WIRE ON THE
 4 PIN MTA CONNECTOR TO CHASSIS
 GROUND NOT BOARD GROUND.

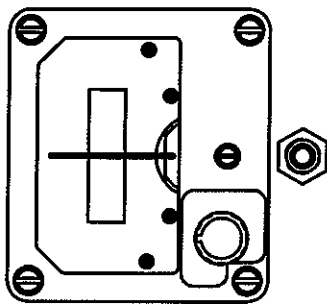
REV #	ALTERATIONS	DATE	BY
1	VALID	09/01/05	PW
2	ECF # 1863	1/30/06	CMC



DRAWN	DATE	CHK	DATE	REV	DATE
PW	03/14/06			1	03/14/06
DWG NUM	4464-114	SCALE	FULL 0 OTHER 1=2	TITLE	PORTABLE SCALER OPTION
LUDLUM MEASUREMENTS, INC. 500 CHK STREET STEVENS POINT, WIS 53076			SERIES	464	SHEET
				114B	

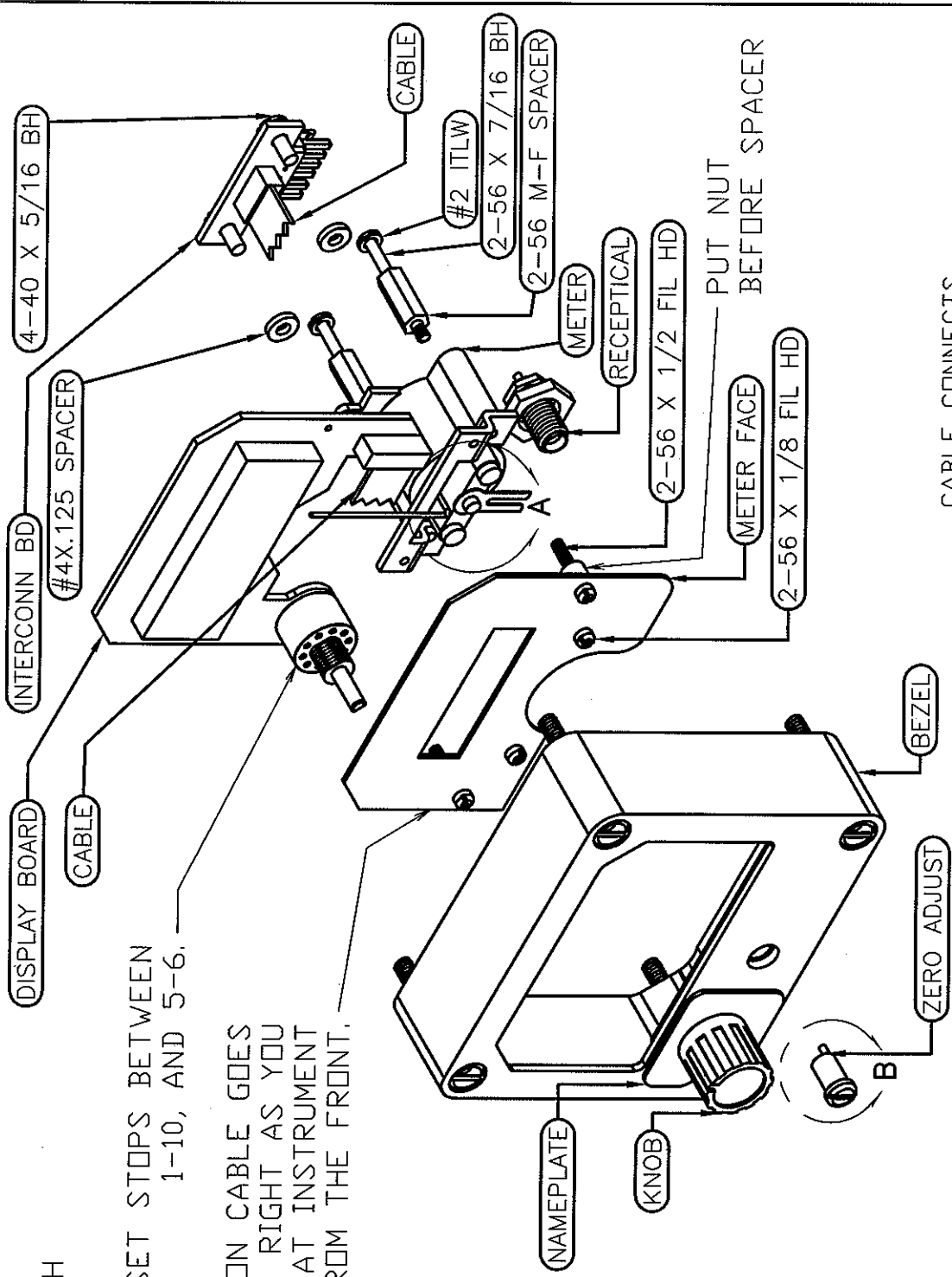
REV #	ALTERATIONS	DATE	BY
1	VALID	03/13/06	PW

NOTE: CHECK THE NEEDLE TO SEE IF IT IS TOO HIGH OR TOO LOW.

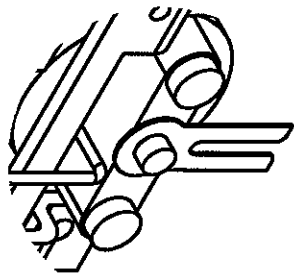


SET STOPS BETWEEN 1-10, AND 5-6.

RIBBON CABLE GOES TO THE RIGHT AS YOU LOOK AT INSTRUMENT FROM THE FRONT.



CABLE CONNECTS FROM DISPLAY BOARD TO INTER-CONNECT BOARD



DETAIL A
SCALE 1.6:1

METER ADJUST IS TO BE BENT BACK @ 90° THEN BENT DOWN @ 90°

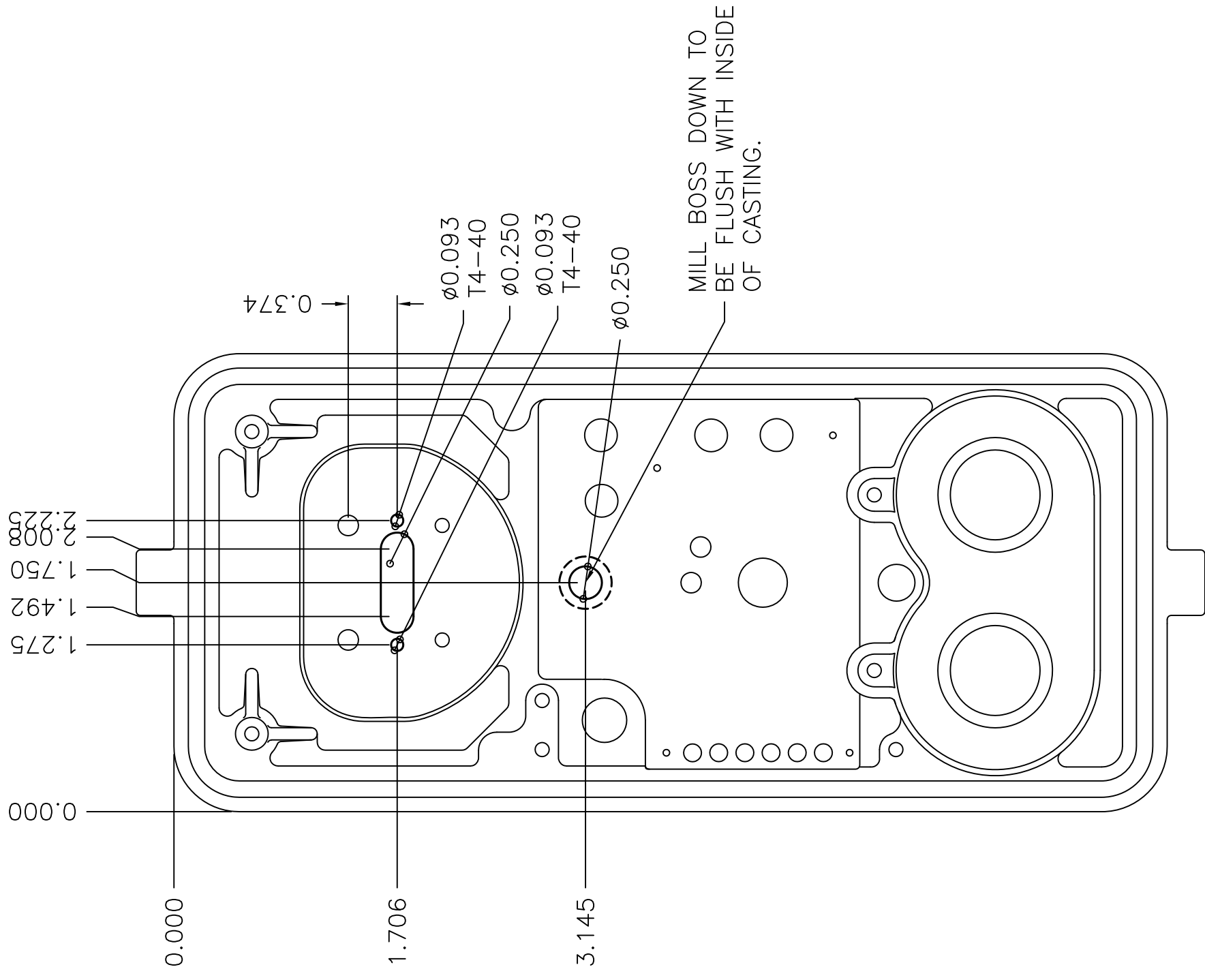


ZERO ADJUST TO BE CLIPPED TO APPROX. 1/16"

DETAIL B
SCALE 1.6:1

DWG DATE	CHK DATE	DATE	APP
03/13/06			
DWG NUM	4464-114	SCALE	FULL
TITLE			
PORTABLE SCALER OPTION			
LUDLUM MEASUREMENTS, INC.			SHEET
500 DAK STREET			464
SWEETWATER, TEXAS 79556			11-4C

REV#	ALTERATIONS	DATE	BY
1	VALID	10/12/01	PW



DESC: CASTING MODIFICATIONS	
MODEL NO: DIG. SCALER	PART NO: 7464-113
MATL: ANY NEW STYLE CASTING	
SIZE: N/A	
MATL. NO: N/A	
FINISH: CLEAN AND DEBUR	NO. REQD: 1
FINAL ASSY. NO: N	SILK SCREEN: N
DWN DATE	CHK DATE
PW 07/14/01	APP DATE
TOL: SHOP STD <input checked="" type="checkbox"/>	SCALE: FULL <input checked="" type="checkbox"/>
OTHER	OTHER
LUDLUM MEASUREMENTS, INC.	SERIES
501 DAK STREET	464
SWEETWATER, TEXAS 79556	113